

GOKULA KRISHNA COLLEGE OF PHARMACY

HEI CODE: C-26844

NAAC DVV

CYCLE I



7 : INSTITUTIONAL VALUES AND BEST PRACTICES

7.1 Institutional Values & Social Responsibilities

7.1.3 Quality Audits on Environment and Energy undertaken by the Institute

7.1.3(5) Clean & Green Campus Initiatives



Approved by PCI, New Delhi, Government of AP & Affiliated to JNTUA
Recognized by UGC U/S 2(f), An ISO 9001:2015 Certified Institution

Behind RTC Depot, Sullurupeta, Tirupati Dist, Andhra Pradesh - 524121

 9948990116

 www.gkcp.edu.in

 gkcpsp@rediffmail.com



Sri Krishna Educational Society's

GOKULA KRISHNA COLLEGE OF PHARMACY

Approved by PCI-New Delhi, Government of AP & Affiliated to JNTUA

An ISO 9001:2015 Certified Institution

Behind RTC Depot, Sullurupeta, Tirupati Dist, A.P, INDIA - 524121

Mobile : +91 9948990116

email: gkcpsp@rediffmail.com

Web: www.gkcp.edu.in

POLICY ON GREEN CAMPUS

"Earth provides enough to satisfy every man's needs, but not every man's greed."

-Mahatma Gandhi

Creating a Green Campus Environment

A green campus merges environmentally friendly practices and education to advocate for sustainable and eco-friendly behaviors on campus. This concept enables institutions to lead in reshaping their environmental culture and developing innovative solutions to address the environmental, social, and economic needs of society.

Goals of the Go Green Program:

- Establishing an on-campus green committee to formalize the initiative through a policy document detailing strategies and plans.
- Focusing on eliminating inefficiencies, adopting renewable energy sources, proper waste management, eco-friendly procurement, and efficient recycling.
- Incorporating time-bound strategies into institutional planning and budgeting to achieve a clean and sustainable campus.
- Encouraging all members of the Gokula Krishna College of Pharmacy community to embrace self-sustainability and contribute to an environmentally friendly campus.

Key Objectives:

- Raising awareness about environmental issues and the importance of conservation for a sustainable future.
- Cultivating a sense of responsibility and personal commitment to environmental preservation.



Sri Krishna Educational Society's

GOKULA KRISHNA COLLEGE OF PHARMACY

Approved by PCI-New Delhi, Government of AP & Affiliated to JNTUA
An ISO 9001:2015 Certified Institution

Behind RTC Depot, Sullurupeta, Tirupati Dist, A.P, INDIA - 524121

Mobile : +91 9948990116

email: gkcpsp@rediffmail.com

Web: www.gkcp.edu.in

- Implementing technology for a positive environmental and economic impact.
- Promoting eco-friendly practices throughout the college.

Green Campus Initiatives:

- Managing wastewater and harvesting rainwater.
- Maintaining water bodies and distribution systems.
- Creating a plastic-free campus.
- Conducting tree plantation drives.
- Using only LED lights.
- Establishing a digital library.
- Encouraging digital reading materials and effective communication through emails.
- Promoting the reuse of paper for rough work.
- Minimizing the use of fertilizers and pesticides by utilizing on-site compost.
- Ensuring eco-friendly cleaning products.
- Implementing separate biodegradable and non-biodegradable waste bins.
- Repurposing classroom furniture to reduce metal waste.
- Providing incinerators in women's washrooms for sanitary napkin disposal.

Gokula Krishna College of Pharmacy is actively raising awareness among students and staff about green campus practices to maintain a pollution-free environment.




Dr. BALAGOPAL KUMAR
M. Pharm, Ph.D, FIC, FBSS, FAGE, FICCP, MISTE
PROFESSOR & PRINCIPAL
GOKULA KRISHNA COLLEGE OF PHARMACY
SULLURPET, TIRUPATI Dt. A.P - 524121



Sri Krishna Educational Society's

GOKULA KRISHNA COLLEGE OF PHARMACY

Approved by PCI-New Delhi, Government of AP & Affiliated to JNTUA

An ISO 9001:2015 Certified Institution

Behind RTC Depot, Sullurupeta, Tirupati Dist, A.P, INDIA - 524121

Mobile : +91 9948990116

email: gkcpsp@rediffmail.com

Web: www.gkcp.edu.in

POLICY DOCUMENT ON DISABLE FRIENDLY AND BARRIER FREE ENVIRONMENT

Gokula Krishna College of Pharmacy, established in 2007, aims to offer quality pharmacy education to rural students. The college boasts a stimulating academic environment and top-notch infrastructure, being a private, self-financed institution. Approved by PCI in New Delhi and recognized by UGC under Section 2(f), it is affiliated with Jawaharlal Nehru Technological University, Anantapur (JNTUA). The college is dedicated to the holistic development of students, providing enduring and enriching education, establishing itself as a center of academic excellence.

Objectives of the policy:

- Foster an inclusive culture to prevent discrimination, exploitation, and exclusion of disabled individuals.
- Ensure compliance with all disability-related legislation.
- Facilitate the full participation of persons with disabilities and offer equal development opportunities.
- Provide barrier-free movement facilities for individuals with disabilities on campus.

Disabilities:

- Disabilities encompass a range of motor and sensory limitations, including mobility, vision, hearing impairments, as well as those stemming from chronic illnesses and syndromes. Accommodations must be tailored to the specific needs of each individual due to the varying degrees and types of disabilities.



Sri Krishna Educational Society's

GOKULA KRISHNA COLLEGE OF PHARMACY

Approved by PCI-New Delhi, Government of AP & Affiliated to JNTUA

An ISO 9001:2015 Certified Institution

Behind RTC Depot, Sullurupeta, Tirupati Dist, A.P, INDIA - 524121

Mobile : +91 9948990116

email: gkcpsp@rediffmail.com

Web: www.gkcp.edu.in

- The college will establish a specialized committee for individuals with disabilities responsible for formulating, implementing, and revising policies and guidelines.
- The committee's main functions include addressing disability-related matters on campus, ensuring overall accessibility, and handling significant grievances involving individuals with disabilities.

Accessibility policy:

Ensuring access involves making all services, activities, and benefits fully available to qualified individuals with disabilities. The institution has implemented various measures to create a disabled-friendly campus. The college administration and faculty members provide suitable accommodations for each individual with a disability and are committed to resolving access issues. The campus is designed to be barrier-free and accessible for differently-abled individuals.



PRINCIPAL

Dr. BALAGANI PAVAN KUMAR
M. Pharm, Ph.D, FIC, FBSS, FAGE, FICCP, MISTE
PROFESSOR & PRINCIPAL
GOKULA KRISHNA COLLEGE OF PHARMACY
SULLURPET, TIRUPATI Dt. A.P - 524121



Sri Krishna Educational Society's

GOKULA KRISHNA COLLEGE OF PHARMACY

Approved by PCI-New Delhi, Government of AP & Affiliated to JNTUA

An ISO 9001:2015 Certified Institution

Behind RTC Depot, Sullurupeta, Tirupati Dist, A.P, INDIA - 524121

Mobile : +91 9948990116

email: gkcpsp@rediffmail.com

Web: www.gkcp.edu.in

POLICY ON ENVIRONMENT AND ENERGY UTILISATION

At Gokula Krishna College of Pharmacy, we are committed to maintaining a clean and environmentally friendly campus. Our focus is on integrating eco-friendly practices into teaching and activities to promote sustainable behavior. By embracing the green campus concept, we aim to lead the way in cultivating an environmental culture among students and faculty. To foster eco-consciousness and promote environmental stewardship, we encourage everyone to adopt and support eco-friendly practices. Addressing the escalating environmental challenges caused by human activities requires a collective effort to protect our planet and enhance our interactions with the environment and each other. Innovative problem-solving strategies are crucial for driving real change.

Objectives:

- Encourage students to preserve a clean and green environment.
- Educate students and raise awareness among the community.
- Instill in students the value of environmental conservation and its challenges.
- This policy applies to all members of the institution, including staff and students, across all activities. It aims to promote efficiency and environmental awareness to conserve natural resources and reduce usage.
- Monitor energy consumption and its environmental impact.
- Implement solar panels for alternative energy generation.



Sri Krishna Educational Society's

GOKULA KRISHNA COLLEGE OF PHARMACY

Approved by PCI-New Delhi, Government of AP & Affiliated to JNTUA

An ISO 9001:2015 Certified Institution

Behind RTC Depot, Sullurupeta, Tirupati Dist, A.P, INDIA - 524121

Mobile : +91 9948990116

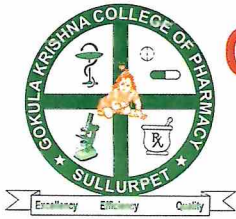
email: gkcpsp@rediffmail.com

Web: www.gkcp.edu.in

- Practice energy-saving habits such as turning off monitors and lights when not in use.
- Utilize LED or compact fluorescent bulbs to conserve energy.
- Optimize the use of lighting and fans in different areas of the institution.
- Install water heaters in hostels using non-conventional energy sources.
- Promote eco-friendly transportation options to reduce local air pollution.
- Conduct tree plantation drives.
- Embrace advanced technologies to minimize energy consumption and emissions.

Promotion of "save energy tips" in and outside the institute:

- Enable power management features on your computer and monitor to enter a low-power "sleep" mode when not in use.
- Switch off your monitor when leaving your desk.
- Activate power management features on your laser printer.
- Opt to shut down instead of logging off whenever possible.
- Use daylight instead of unnecessary lights.
- Minimize decorative lighting usage.
- Opt for LED or compact fluorescent bulbs.
- Turn off lights in idle conference rooms, classrooms, and lecture halls.
- Use fans only when necessary.



Sri Krishna Educational Society's

GOKULA KRISHNA COLLEGE OF PHARMACY

Approved by PCI-New Delhi, Government of AP & Affiliated to JNTUA

An ISO 9001:2015 Certified Institution

Behind RTC Depot, Sullurupeta, Tirupati Dist, A.P, INDIA - 524121

Mobile : +91 9948990116

email: gkcp@rediffmail.com

Web: www.gkcp.edu.in

Renewable energy: Solar energy is the institute's favored renewable energy source.

Stakeholders are urged to promote and embrace solar energy.

Pedestrian-friendly pathways: The campus offers ample parking for staff and students with well-maintained roads that provide safe walking pathways.

Waste management: The institute adopts the three R's (reduce, recycle, and reuse) for waste management:

- Green bins for bio-degradable (wet) waste and blue bins for non-biodegradable (dry) waste.
- Using half sheets of paper for rough work.
- Incinerators in women's washrooms for sanitary napkin disposal.
- Canteen waste utilized for bio-gas production.
- Composting vegetable and food waste for use as fertilizer.
- Encouraging electronic content forms over paper usage.



Praveen
Dr. BALAGOPAL KUMAR
M. Pharm, Ph.D, FIC, FBSS, FAGE, FICCP, MISTE
PROFESSOR & PRINCIPAL
GOKULA KRISHNA COLLEGE OF PHARMACY
SULLURPET, TIRUPATI Dt. A.P - 524121



GOKULA KRISHNA COLLEGE OF PHARMACY

Approved by PCI-New Delhi, Government of AP & Affiliated to JNTUA

An ISO 9001:2015 Certified Institution

Behind RTC Depot, Sullurupeta, Tirupati Dist, A.P, INDIA - 524121

Mobile : 9948990116

E-Mail : gkcp@rediffmail.com

website: www.gkcp.edu.in

14-07-2022

CIRCULAR

In accordance with World Environment Day, this year's campaign is celebrated under the theme "Only One Earth," with the focus on living sustainably in harmony with nature. The college declares the campus a "plastic-free zone," and the staff and students are hereby informed to avoid and ban single-use plastic with immediate effect.

PRINCIPAL

Dr. BALAGANI PAVAN KUMAR

M. Pharm, Ph.D, FIC, FBSS, FAGE, FICCP, MISTE

PROFESSOR & PRINCIPAL

GOKULA KRISHNA COLLEGE OF PHARMACY

SULLURPET, TIRUPATI Dt. A.P - 524121

Copy to

1. Coordinator – IQAC
2. NSS Program Officer
3. All teaching / non teaching staff
4. Circulation to students
5. Accounts office for information
6. Admin office for information
7. Office file





GOKULA KRISHNA COLLEGE OF PHARMACY

Approved by PCI-New Delhi, Government of AP & Affiliated to JNTUA

An ISO 9001:2015 Certified Institution

Behind RTC Depot, Sullurupeta, Tirupati Dist, A.P, INDIA - 524121

Mobile : 9948990116

E-Mail : gkcpsp@rediffmail.com

website: www.gkcp.edu.in

16-07-2022

CIRCULAR

In accordance with the college's green strategy and to greatly reduce pollution caused by air pollutants, faculty and staff are encouraged to use the bicycle facilities within campus for internal travels. Motorized modes of transportation should be avoided on campus.

PRINCIPAL

Dr. BALAGANI PAVAN KUMAR
M. Pharm, Ph.D, FIC, FBSS, FAGE, FICCP, MISTE
PROFESSOR & PRINCIPAL
GOKULA KRISHNA COLLEGE OF PHARMACY
SULLURPET, TIRUPATI Dt. A.P - 524121

Copy to

1. Coordinator – IQAC
2. All teaching / non teaching staff
3. Circulation to students
4. Accounts office for information
5. Admin office for information
6. Office file





GOKULA KRISHNA COLLEGE OF PHARMACY

Approved by PCI-New Delhi, Government of AP & Affiliated to JNTUA

An ISO 9001:2015 Certified Institution

Behind RTC Depot, Sullurupeta, Tirupati Dist, A.P, INDIA - 524121

Mobile : 9948990116

E-Mail : gkcpsp@rediffmail.com

website: www.gkcp.edu.in

REPORT ON GREEN CAMPUS INITIATIVES


Creating a Sustainable Campus Environment

A green campus integrates environmentally friendly practices and education to encourage sustainable and eco-friendly behaviors on campus. This concept empowers institutions to lead in reshaping their environmental practices and devising innovative solutions to address environmental, social, and economic challenges. Greening the campus involves eliminating inefficiencies, utilizing renewable energy sources, proper waste disposal, purchasing eco-friendly supplies, and implementing a robust recycling program. Institutions must establish time-bound strategies to execute green campus initiatives, integrating these plans into their institutional planning and budgeting processes for a cleaner and greener campus.

Major Green campus initiatives in GKCP campus:

- Rain Water Harvesting
- Recycling bin for Biodegradable and non-biodegradable waste
- Planting and landscaping of trees and plants
- Restricted entry of vehicles in to campus
- Restricted parking
- Usage of public transport
- Pedestrian friendly road
- Paperless Office
- Plastic free campus




Dr. BALAGANTHAVAN KUMAR
M. Pharm, Ph.D, FIC, FBSS, FAGE, FICCP, MISTE
PROFESSOR & PRINCIPAL
GOKULA KRISHNA COLLEGE OF PHARMACY
SULLURPET, TIRUPATI Dt. A.P - 524121



GOKULA KRISHNA COLLEGE OF PHARMACY

Approved by PCI-New Delhi, Government of AP & Affiliated to JNTUA

An ISO 9001:2015 Certified Institution

Behind RTC Depot, Sullurupeta, Tirupati Dist, A.P, INDIA - 524121

Mobile : 9948990116

E-Mail : gkcp@rediffmail.com

website: www.gkcp.edu.in

A.Y: 2022-23

I. Name of the Program: JOIN THE REVOLUTION – CLEAN AND GREEN

II. Date: 24-04-2023

III. Venue: Gokula Krishna College of Pharmacy Campus

Report:

NSS Unit-I, Gokula Krishna College of Pharmacy, organized the Clean and Green program on campus to create awareness among the students. A clean and green environment is a basic need today. For the earth to survive, pollution must be tackled and reversed. Fraternity on plants and the environment. A clean and green environment implies the absence of pollution and a better quality of life. Green, on the other hand, has a direct link to promoting good health. Literally, a green environment means an abundance of trees and greenery. In a metaphorical sense, green refers to being eco-friendly. So a 'Green college' would mean a school that replaces all its systems with eco-friendly alternatives such as electronic communication instead of paper circulars, etc. The usage of electricity is reduced, power-saving equipment is used, and recycling is encouraged. Principal Dr. Balagani Pavan Kumar, staff, the NSS PO, and NSS volunteers participated in the program.

“BEING GREEN AND CLEAN IS NOT JUST AN ASPIRATION BUT AN ACTION”



Dr. BALAGANI PAVAN KUMAR
M. Pharm, Ph.D, FIC, FBSS, FAGE, FICOP, MISTE
PROFESSOR & PRINCIPAL
GOKULA KRISHNA COLLEGE OF PHARMACY
SULLURPET, TIRUPATI Dt. A.P - 524121



GOKULA KRISHNA COLLEGE OF PHARMACY

Approved by PCI-New Delhi, Government of AP & Affiliated to JNTUA

An ISO 9001:2015 Certified Institution

Behind RTC Depot, Sullurupeta, Tirupati Dist, A.P, INDIA - 524 121

Mobile : 9948990116

E-Mail : gkcp@rediffmail.com

website: www.gkcp.edu.in



Laway
Dr. BALAGANT PAVAN KUMAR
M. Pharm, Ph.D, FIC, FBSS, FAGE, FICCP, MISTE
PROFESSOR & PRINCIPAL
GOKULA KRISHNA COLLEGE OF PHARMACY
SULLURPET, TIRUPATI Dt. A.P - 524121



GOKULA KRISHNA COLLEGE OF PHARMACY

Approved by PCI-New Delhi, Government of AP & Affiliated to JNTUA

An ISO 9001:2015 Certified Institution

Behind RTC Depot, Sullurupeta, Tirupati Dist, A.P, INDIA - 524121

Mobile : 9948990116

E-Mail : gkcpsp@rediffmail.com

website: www.gkcp.edu.in

A.Y: 2022-23

I. Name of the Program: Come and do your best "**Pachadhanam - Parishubratha**"

II. Date: 02-08-2022

III. Venue: Gokula Krishna College of Pharmacy Campus

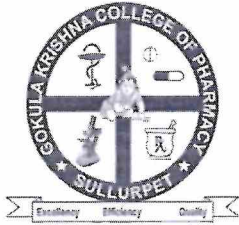
Report:

Gokula Krishna College of Pharmacy organized the "**Pachadhanam-Parishubratha**" program on campus to create awareness among the students "**that a**" healthy environment is a basic need today. For the living things on earth to survive, pollution must be tackled and efficiently reversed. Everyone should be fraternity with plants and the environment. A clean and green environment implies the absence of pollution and a better quality of life. Literally, a green environment means an abundance of trees and greenery. So a clean college or 'green college' would mean an institute that replaces all its systems with eco-friendly alternatives such as electronic communication instead of paper circulars. The usage of electricity is reduced, power-saving equipment is used, and recycling is encouraged. Our Campus: "**Clean Campus**" and "**Green Campus**"

"Keep Your World Clean and Green Save Trees. Save the Environment"




Dr. BALAGAN PAVAN KUMAR
M. Pharm, Ph.D, FIC, FBSS, FAGE, FICOP, MISTE
PROFESSOR & PRINCIPAL
GOKULA KRISHNA COLLEGE OF PHARMACY
SULLURPET, TIRUPATI Dt. A.P - 524121



GOKULA KRISHNA COLLEGE OF PHARMACY

Approved by PCI-New Delhi, Government of AP & Affiliated to JNTUA

An ISO 9001:2015 Certified Institution

Behind RTC Depot, Sullurupeta, Tirupati Dist, A.P, INDIA - 524121

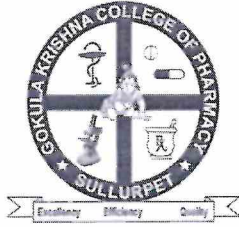
Mobile : 9948990116

E-Mail : gkcp@rediffmail.com

website: www.gkcp.edu.in



Pavan
Dr. BALAGANI PAVAN KUMAR
M. Pharm, Ph.D, FIC, FBSS, FAGE, FICCP, MISTE
PROFESSOR & PRINCIPAL
GOKULA KRISHNA COLLEGE OF PHARMACY
SULLURPET, TIRUPATI Dt. A.P - 524121



GOKULA KRISHNA COLLEGE OF PHARMACY

Approved by PCI-New Delhi, Government of AP & Affiliated to JNTUA

An ISO 9001:2015 Certified Institution

Behind RTC Depot, Sullurupeta, Tirupati Dist, A.P, INDIA - 524121

Mobile : 9948990116

E-Mail : gkcp@rediffmail.com

website: www.gkcp.edu.in

I. Name of the Program: Join the Revolution - Vanam-Manam

II. Date: 11-10-2021

III. Venue: Gokula Krishna College of Pharmacy Campus

Report:

NSS Unit-I, Gokula Krishna College of Pharmacy, organized the VANAM-MANAM program on campus to create awareness among the student fraternity on plants and the environment. plant trees, and save the earth. With the rising awareness about the importance of planting trees and the positive impact it will have on the environment. The natural ecosystem heavily depends on trees and plants on supporting the smaller insects, animals and birds for shelter and food. The Vanama Manam program has been conducted as part of regular NSS activity. Principal Dr. Balagani Pavan Kumar, educated the students on the importance of tree plantations. Teaching staff, the NSS PO, and NSS volunteers participated in the program.

PLANT A TREE, SO THAT THE NEXT GENERATION CAN GET AIR FOR FREE."



Pavan
Dr. BALAGANI PAVAN KUMAR
M. Pharm, Ph.D, FIC, FBSS, FAGE, FICCP, MISTE
PROFESSOR & PRINCIPAL
GOKULA KRISHNA COLLEGE OF PHARMACY
SULLURPET, TIRUPATI Dt. A.P - 524121



GOKULA KRISHNA COLLEGE OF PHARMACY

Approved by PCI-New Delhi, Government of AP & Affiliated to JNTUA

An ISO 9001:2015 Certified Institution

Behind RTC Depot, Sullurupeta, Tirupati Dist, A.P, INDIA - 524121

Mobile : 9948990116

E-Mail : gkcp@rediffmail.com

website: www.gkcp.edu.in

I. Name of the Program: Join the Revolution - Vanam-Manam

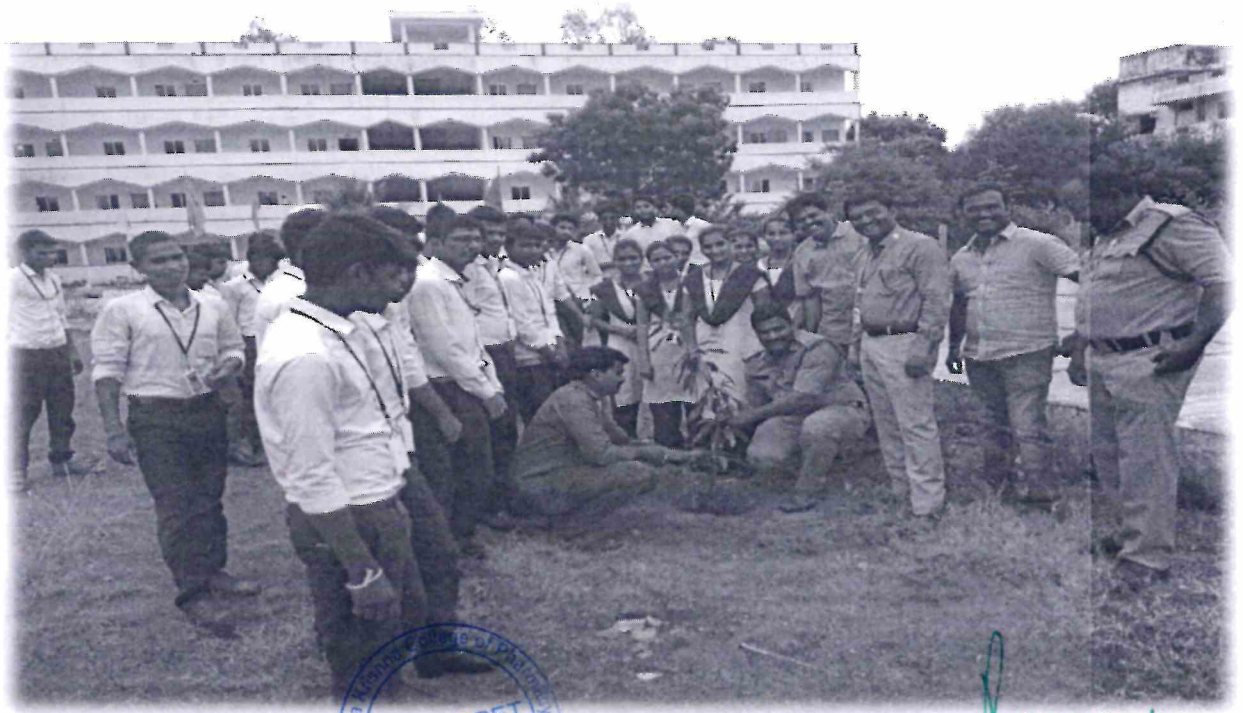
II. Date: 30-09-2019

III. Venue: Gokula Krishna College of Pharmacy Campus

Report:

NSS Unit-I, Gokula Krishna College of Pharmacy, organized the VANAM-MANAM program on campus to create awareness among the student fraternity on plants and the environment. plant trees, and by extension save the earth. With the rising awareness about the importance of planting trees and the positive impact it will have on the environment. The natural ecosystem heavily depends on trees and plants on supporting the smaller insects, animals and birds for shelter and food. The Vanama Manam program has been conducted as part of regular NSS activity. Sir. GANGADHAR. SI of Police, Sullurpet, was invited as chief guest and educated the student on the importance of tree plantations. Principal Dr. Balagani Pavan Kumar, staff, the NSS PO, and NSS volunteers participated in the program.

“PLANT A TREE - SAVE MOTHER EARTH”



Pavan
Dr. BALAGANI PAVAN KUMAR
M. Pharm, Ph.D, FIC, FBSS, FAGE, FICCP, MISTE
PROFESSOR & PRINCIPAL
GOKULA KRISHNA COLLEGE OF PHARMACY
SULLURPET, TIRUPATI Dt. A.P - 524121



GOKULA KRISHNA COLLEGE OF PHARMACY

Approved by PCI-New Delhi, Government of AP & Affiliated to JNTUA

An ISO 9001:2015 Certified Institution

Behind RTC Depot, Sullurupeta, Tirupati Dist, A.P, INDIA - 524121

Mobile : 9948990116

E-Mail : gkcp@rediffmail.com

website: www.gkcp.edu.in



Pavan
Dr. BALAGANT PAVAN KUMAR
M. Pharm, Ph.D, FIC, FBSS, FAGE, FICCP, MISTE
PROFESSOR & PRINCIPAL
GOKULA KRISHNA COLLEGE OF PHARMACY
SULLURPET, TIRUPATI Dt. A.P - 524121



GOKULA KRISHNA COLLEGE OF PHARMACY

Approved by PCI-New Delhi, Government of AP & Affiliated to JNTUA

An ISO 9001:2015 Certified Institution

Behind RTC Depot, Sullurupeta, Tirupati Dist, A.P, INDIA - 524121

Mobile : 9948990116

E-Mail : gkcp@rediffmail.com

website: www.gkcp.edu.in

I. Name of the Program: Join the Revolution - CLEEN AND GREEN

II. Date: 15-06-2018

III. Venue: Gokula Krishna College of Pharmacy Campus

Report:

Gokula Krishna College of Pharmacy organized the Clean and Green program on campus to create awareness among the student Clean and green environment is a basic need today. Environment must be protected from the pollution and control the pollution. Pollution controlled by tree plantation. Clean and green environment imply a better quality of life. Green environment need on the other hand to promoting good health. the main motto of GKCP "That is why we reduce pollution by planting trees and reducing the use of plastic"

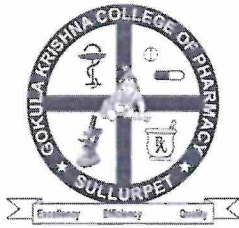
"LIVE GREEN LOVE GREEN

BE GREEN

WE ARE JUST MANKIND WITH OUT THE EARTH WE'RE NOTHING ELSE"




Dr. BALAGANI PAVAN KUMAR
M. Pharm, Ph.D. FIC, FBSS, FAGE, FICCP, MISTE
PROFESSOR & PRINCIPAL
GOKULA KRISHNA COLLEGE OF PHARMACY
SULLURPET, TIRUPATI Dt. A.P - 524121



GOKULA KRISHNA COLLEGE OF PHARMACY

Approved by PCI-New Delhi, Government of AP & Affiliated to JNTUA

An ISO 9001:2015 Certified Institution

Behind RTC Depot, Sullurupeta, Tirupati Dist, A.P, INDIA - 524121

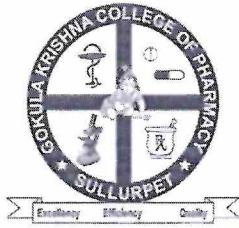
Mobile : 9948990116

E-Mail : gkcp@rediffmail.com

website: www.gkcp.edu.in



Kavay
Dr. BALAGANI PAVAN KUMAR
M. Pharm, Ph.D, FIC, FBSS, FAGE, FICCP, MISTE
PROFESSOR & PRINCIPAL
GOKULA KRISHNA COLLEGE OF PHARMACY
SULLURPET, TIRUPATI Dt. A.P - 524121



GOKULA KRISHNA COLLEGE OF PHARMACY

Approved by PCI-New Delhi, Government of AP & Affiliated to JNTUA

An ISO 9001:2015 Certified Institution

Behind RTC Depot, Sullurupeta, Tirupati Dist, A.P, INDIA - 524121

Mobile : 9948990116

E-Mail : gkcp@rediffmail.com

website: www.gkcp.edu.in

LANDSCAPING WITH TREES AND PLANTS:

GKCP and NSS Unit-I host an annual tree planting program on the college campus. Both faculty and students actively participate in these programs, with students and staff showing great enthusiasm for planting trees both on and off-campus. Collaborative efforts with SMC (Sullurupeta Municipal Corporation) and other partners focus on environmental activities to combat pollution. The college campus at GKCP boasts a diverse landscape, featuring a mix of old, middle-aged, and young trees, along with herbs and shrubs, all meticulously maintained by skilled professionals. The VANAM-MANAM plantation drive is a highlight of the yearly celebrations, complemented by the planting of various tree species on different occasions. Students and NSS volunteers play a key role in these initiatives, planting a variety of plants such as Neem, Tulasi, Aloe vera, and trees like Acacia nilotica, Tectona grandis, Ficus benghalensis, and many more at Gokula Krishna College of Pharmacy.




Dr. BALAGANI PAVAN KUMAR
M. Pharm, Ph.D, FIC, FBSS, FAGE, FICCP, MISTE
PROFESSOR & PRINCIPAL
GOKULA KRISHNA COLLEGE OF PHARMACY
SULLURPET, TIRUPATI Dt. A.P - 524121



GOKULA KRISHNA COLLEGE OF PHARMACY

Approved by PCI-New Delhi, Government of AP & Affiliated to JNTUA

An ISO 9001:2015 Certified Institution

Behind RTC Depot, Sullurupeta, Tirupati Dist, A.P, INDIA - 524121

Mobile : 9948990116

E-Mail : gkcp@rediffmail.com

website: www.gkcp.edu.in



Pavan
Dr. BALAGANI PAVAN KUMAR
M. Pharm, Ph.D, FIC, FBSS, FAGE, FICCP, MISTE
PROFESSOR & PRINCIPAL
GOKULA KRISHNA COLLEGE OF PHARMACY
SULLURPET, TIRUPATI Dt. A.P - 524121



GOKULA KRISHNA COLLEGE OF PHARMACY

Approved by PCI-New Delhi, Government of AP & Affiliated to JNTUA

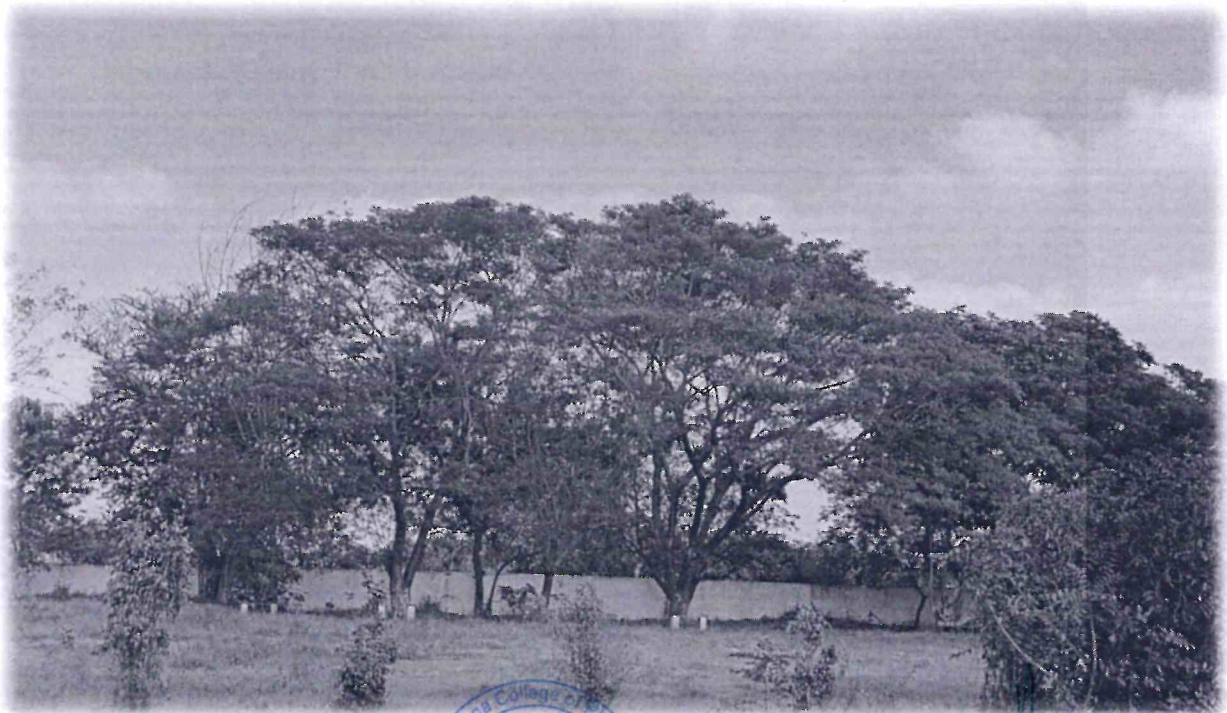
An ISO 9001:2015 Certified Institution

Behind RTC Depot, Sullurupeta, Tirupati Dist, A.P, INDIA - 524 121

Mobile : 9948990116

E-Mail : gkcp@rediffmail.com

website: www.gkcp.edu.in



Paavan
Dr. BALAGANI PAVAN KUMAR
M. Pharm, Ph.D. FIC, FBSS, FAGE, FICCP, MISTE
PROFESSOR & PRINCIPAL
GOKULA KRISHNA COLLEGE OF PHARMACY
SULLURPET, TIRUPATI Dt. A.P - 524121



GOKULA KRISHNA COLLEGE OF PHARMACY

Approved by PCI-New Delhi, Government of AP & Affiliated to JNTUA

An ISO 9001:2015 Certified Institution

Behind RTC Depot, Sullurupeta, Tirupati Dist, A.P, INDIA - 524121

Mobile : 9948990116

E-Mail : gkcp@rediffmail.com

website: www.gkcp.edu.in

I. Name of the Program: "Awareness Program on Rain Water Harvesting"

II. Venue: Gokula Krishna College of Pharmacy Campus

Report:

NSS Unit-I of Gokula Krishna College Of Pharmacy, Sullurupeta conducted an awareness program on Rain Water Harvesting inside the campus. The objective of this program is to use the locally available rainwater to meet water requirements throughout the year without the need of enormous capital expenditure. NSS coordinator explained the uses of rain water harvesting to the students. Many universities warn that rainwater harvesting is essential because next generations will face the water scarcity. Hence careful use of water and raising the water table through boreholes is the main motto of Gokula Krishna College of Pharmacy.

BEFORE YOU GET BLAMED BY YOUR SON OR DAUGHTER, HARVEST EVERY DROP OF RAIN WATER.



Kavay
Dr. BALAGANI PAVAN KUMAR
M. Pharm, Ph.D, FIC, FBSS, FAGE, FICCP, MISTE
PROFESSOR & PRINCIPAL
GOKULA KRISHNA COLLEGE OF PHARMACY
SULLURPET, TIRUPATI Dt. A.P - 524121